

A photograph of the Tung Chung Cable Car system. Several green cable cars are suspended from cables, moving up a steep, grassy hill. In the background, a cityscape and a body of water are visible under a cloudy sky. The text 'Case Studies' is centered in the upper half, and 'Tung Chung Cable Car' is written in large blue letters across the middle. The photo credit '(Photo: MTRCL)' is in the bottom right corner.

## Case Studies

# Tung Chung Cable Car

(Photo: MTRCL)

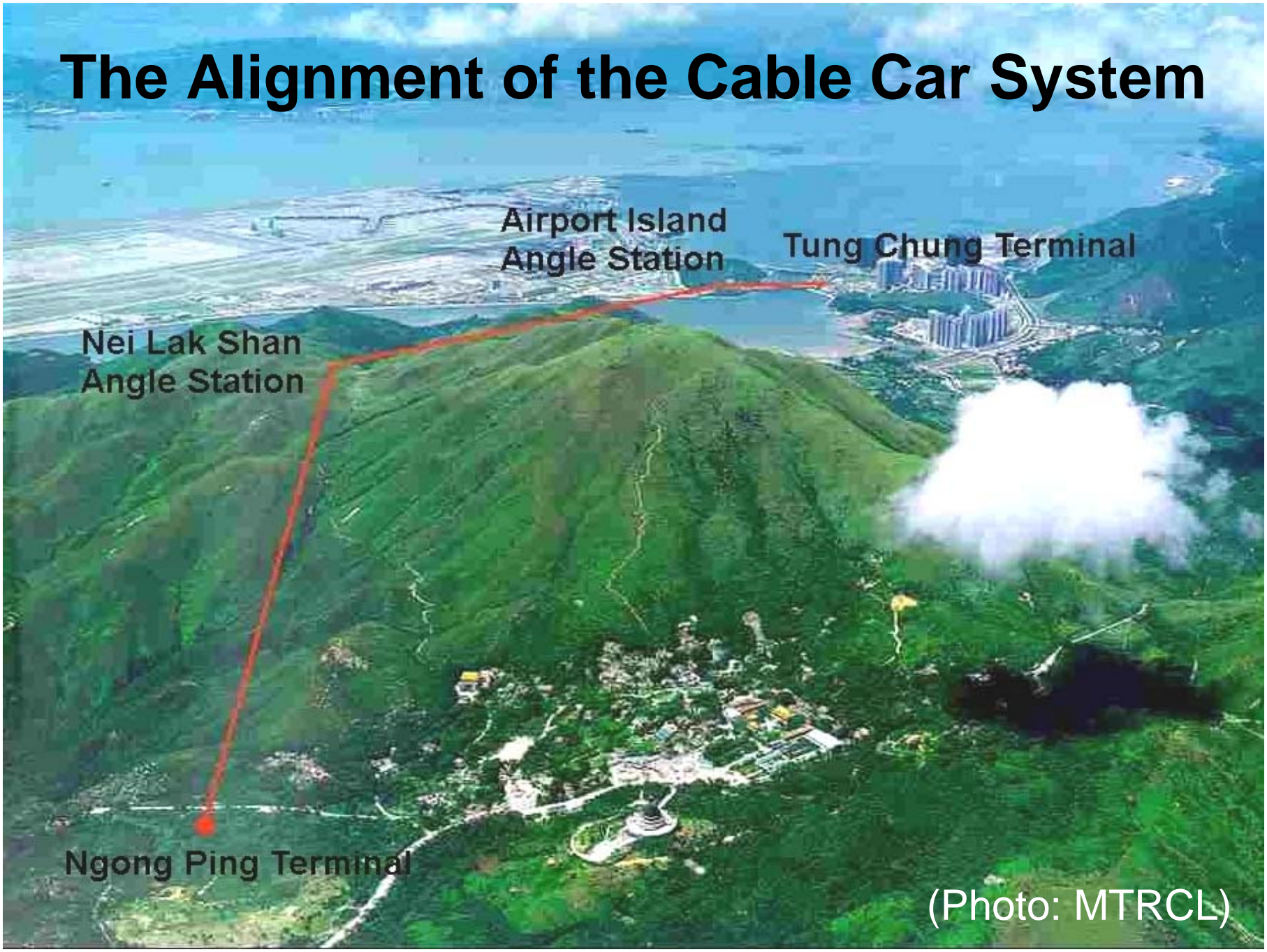
# Tung Chung Cable Car



- **Enabling visitors to appreciate and experience the natural landscape & sceneries**
- **Improving the accessibility to existing tourist attractions on Lantau**
- **Foster synergy among attractions on Lantau**

(Photo: MTRCL)

# The Alignment of the Cable Car System



Airport Island  
Angle Station

Tung Chung Terminal

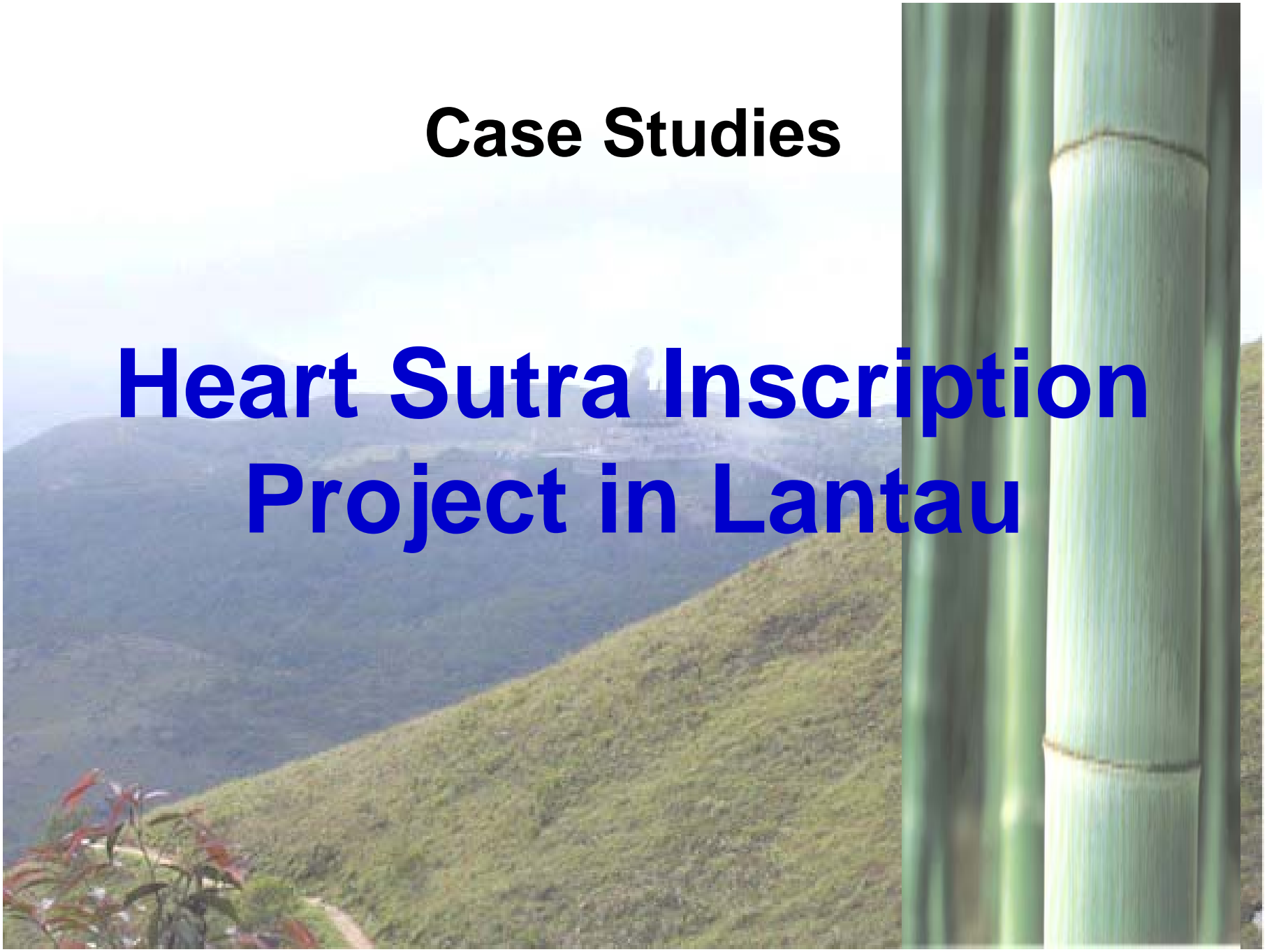
Nei Lak Shan  
Angle Station

Ngong Ping Terminal

(Photo: MTRCL)

# Case Studies

## Heart Sutra Inscription Project in Lantau



# Heart Sutra Inscription Project



# Heart Sutra Inscription Project



- ◆ large-scale outdoor installation
- ◆ this project combines art with philosophy

# Pilot Initiative

- ◆ **Urban Tourism Trail –  
Wong Nai Chung Gap Trail**



(Photos: Agriculture, Fisheries and Conservation Department)

# Pilot Initiative

- ◆ **Urban Tourism Trail –  
Wong Nai Chung Gap Trail**



(Photos: Agriculture, Fisheries and Conservation Department)



An aerial photograph of the Hong Kong Wetland Park. A prominent feature is a long, modern walkway with a glass and metal railing that curves along the edge of a large, shallow wetland. The water is dark blue, and there are patches of green vegetation and lily pads. In the background, there are more green spaces, a road with a few cars, and a building with a red roof. The overall scene is a blend of natural wetland and modern architectural design.

## Case Studies

# Hong Kong Wetland Park

Hong Kong Wetland Park  
<http://www.afcd.gov.hk/wetlandpark/>

# Hong Kong Wetland Park



(Photos: Agriculture, Fisheries and Conservation Department)