

NOTE FOR PUBLIC WORKS SUBCOMMITTEE OF FINANCE COMMITTEE

Supplementary Information on 389RO - Enhancement of public facilities at Ngong Ping, Lantau

INTRODUCTION

At the meeting of the Public Works Subcommittee on 9 January 2008, in endorsing the proposed enhancement of public facilities at Ngong Ping as set out in PWSC(2007-08)67, Members requested supplementary information on various issues. This note provides the required information.

THE ADMINISTRATION'S RESPONSE

GREENING WORKS

2. In the original greening proposals at the proposed Ngong Ping Piazza (the proposed Piazza) as agreed with the Po Lin Monastery (PLM), species such as *Ficus Rumphii* (菩提樹), *Osmanthus Fragrans* (桂花樹) and *Podocarpus Macrophylla* (羅漢松), which are commonly used in Buddhist settings, would be provided. In addition, there would be lawns on both sides of the Bodhi Path.

3. In the light of Members' suggestions, Architectural Services Department (ArchSD) has enhanced the greening plan in consultation with PLM, as follows –

- (a) to provide 22 additional trees in the proposed Piazza, and extend the size of the planting area and the lawn by 260 square metres (m²) and 50 m² respectively. As shown on the revised layout plan at Enclosure 1, we have maximised the greening works in the proposed Piazza as far as practicable; and

/(b)

- (b) to upgrade 25 Ficus Rumphii along the Bodhi Path to semi-mature trees of at least 6 metres (m) high and 13 Osmanthus Fragrans around the pavilion to a bigger size of at least 1.5 m high to provide better greening effect upon opening of the Piazza to public use.

4. These enhancements will not increase the overall capital and recurrent costs of the project. Additional capital cost, if any, will be offset by the savings resulting from reduction of the size of the hard-paved area or absorbed by project contingency provisions.

PROVISION OF PUBLIC TOILETS

5. Some Members were concerned about the adequacy of toilet provision in the Ngong Ping area. At present, there are four public toilets managed by the Food and Environmental Hygiene Department (FEHD) and Ngong Ping 360 in the Ngong Ping area, and their locations are shown in Enclosure 2. Altogether they provide 22 cubicles and 30 urinals for male visitors, 43 cubicles for female visitors and five cubicles for visitors with a disability. According to the Hong Kong Tourism Board (HKTB) and Travel Industry Council of Hong Kong (TIC), they have not received any complaint about toilet provision at the Ngong Ping area.

6. In anticipation of visitor increase, we propose to provide an additional public toilet in the area. The proposed public toilet will provide an addition of five cubicles and eight urinals for male visitors, 10 cubicles for female visitors and one cubicle for visitors with a disability. The total provisions are detailed in Enclosure 3. With the additional toilet, the overall handling capacity

/of

of public toilets in the area will be increased from about 4 200 to 5 200¹ visitors per hour. Having regard to the short distance of 570 m between the Ngong Ping 360 Terminal and the entrance of PLM, we consider that the public toilet facilities in the area are sufficient to meet the anticipated demand in the area. We will provide clear signage to facilitate visitors to locate the nearby toilets, which should be within a walking distance of about five minutes from any location in the Ngong Ping area. We will continue to review the situation in consultation with the travel industry in order to better meet our visitors' needs.

USAGE OF EMERGENCY VEHICULAR ACCESS (EVA)

7. On the use of the future EVA, we have discussed Members' concern with PLM. To provide alternative access to PLM, we propose to upgrade an existing van track now serving the local villages, as shown in the layout plan at Enclosure 4. Currently, the van track only provides for single-lane traffic. The proposed upgrading will include repairing and provision of passing bays to improve flow capacity. The estimated capital cost for the upgrading works is about \$1 million, which will be funded outside the project estimate. The District Office (Islands) has pledged to implement this under the Rural Public Works Programme. Subject to necessary approval, it is envisaged that the minor works will commence in July 2008 for completion before the end of this year, well before the completion of the proposed Piazza.

8. This alternative is welcomed by PLM. After completion of the upgrading works, PLM has pledged that its vehicles will use the van track for daily operation. The proposed EVA will be managed by the Leisure and Cultural Services Department (LCSD) upon completion for use by vehicles for emergency and exceptional purposes. LCSD will work out with PLM a practical arrangement, with a view to diverting traffic to the improved van track and minimising the use of the proposed EVA.

/Areas

¹ This estimate is drawn up with reference to the data provided by the Hong Kong Toilet Association on the duration of use of public toilets. Relevant departments will mainly base on the anticipated demand of the area in question, the available facilities in the area and other relevant building constraints in considering proposals for provision of public toilets. In planning for a new public toilet facility, FEHD generally adopts a ratio of one to two for male and female cubicles.

Areas for Dogs and Pets within the Piazza

9. A Member asked whether pets should be allowed in the proposed Piazza. We have consulted PLM and LCSD, which will be managing the proposed Piazza. On balance, we do not propose to designate an area for pets within the proposed Piazza for the following reasons –

- (a) a designated area for pets may not be consistent with the religious setting of the area, particularly where certain parts of the Piazza (such as the Di Tan) will be used for ceremonial functions from time to time; and
- (b) both the Ngong Ping Cable Car and Lantau buses, which are the main means of access to Ngong Ping, do not allow pets. Hence, only few visitors, who are given special permits to drive there can bring pets to the proposed Piazza. It will not be cost-effective to designate and maintain an area to cater for such exceptional demands.

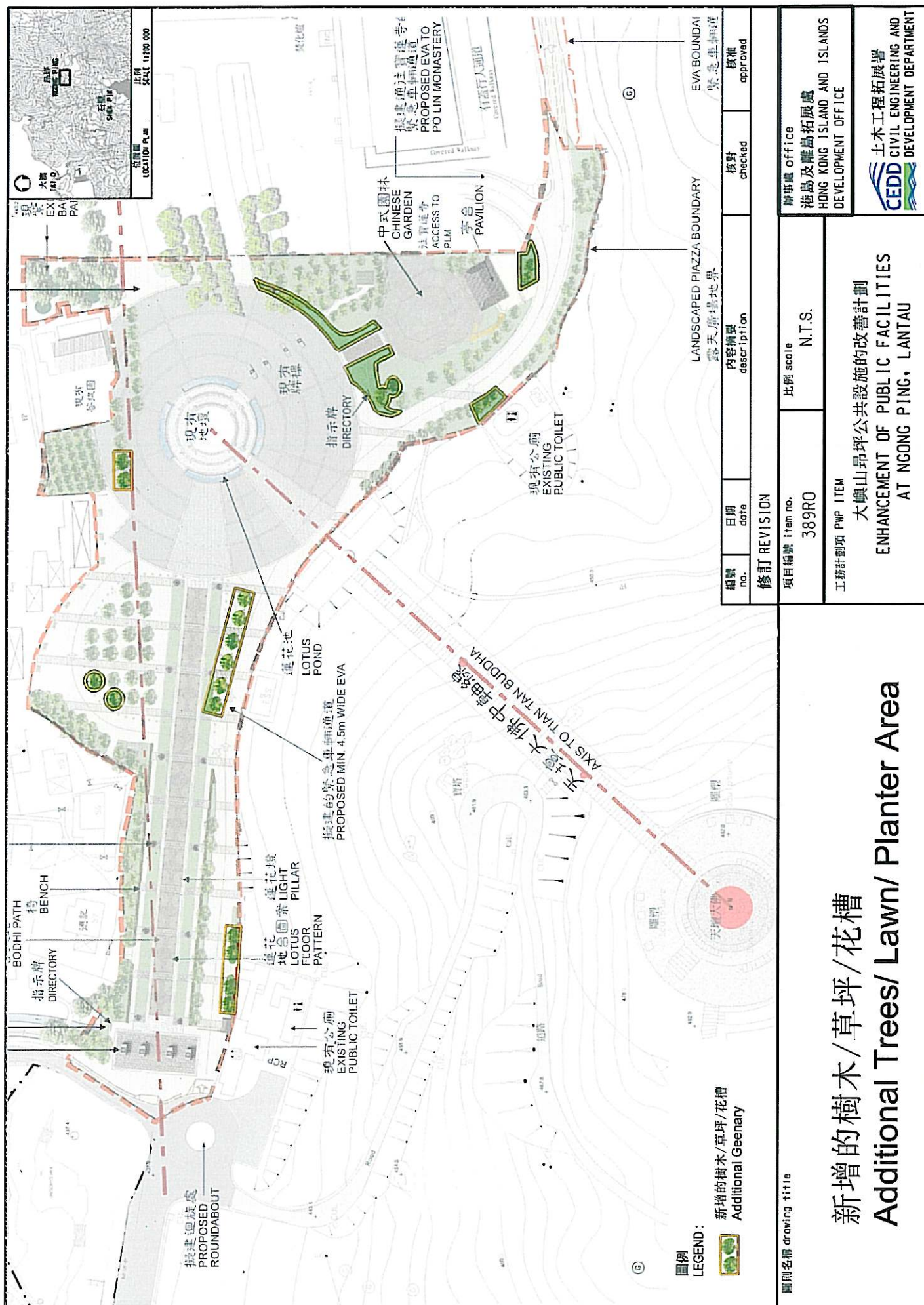
ADOPTION OF ENVIRONMENTAL MEASURES

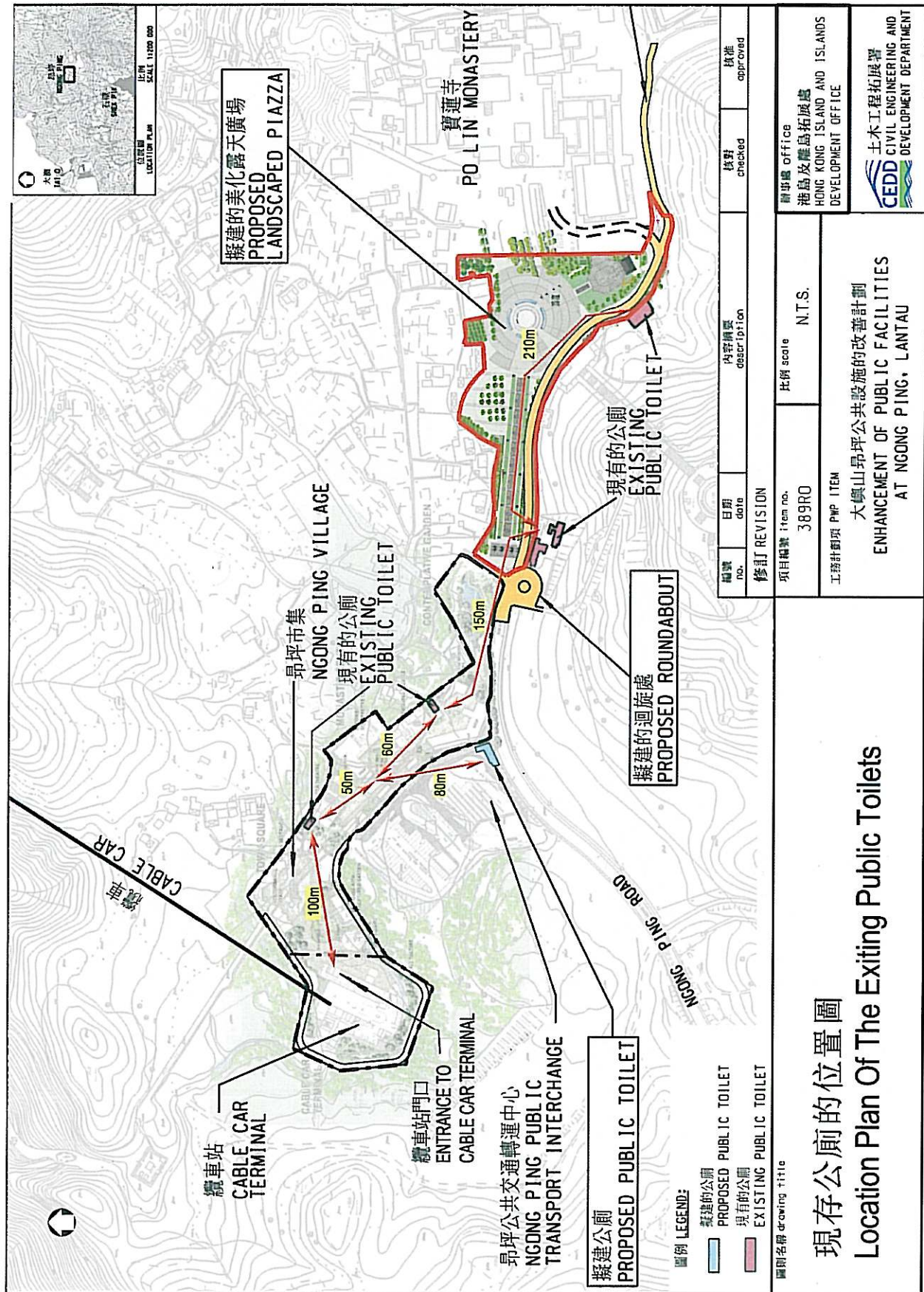
10. On Members' suggestion of implementing environmental and energy conservation measures, the Drainage Services Department and Water Supplies Department have confirmed the technical feasibility to use reclaimed water from the sewage treatment plant at Ngong Ping for the flushing system of the proposed public toilet, in line with the four existing public toilets in the area. The additional capital and recurrent costs will be absorbed by project contingency and the recurrent expenditure of the concerned departments respectively.

/11.

11. In addition, ArchSD will explore the option of adding solar panels on top of the six landscape lighting posts near Di Tan so as to generate power to operate the filtration pumps for the lotus ponds there in day time. The estimated additional capital cost to implement this option is about \$300,000 and, if the option is taken, will be absorbed in project contingency. The solar panels will help save electricity cost by about \$1,600 annually. Since the other lighting posts are too far away from the pump room, and given that no other electrical equipment will operate in the proposed Piazza in daytime, provision of solar panels in other areas of the proposed Piazza will not be further pursued.

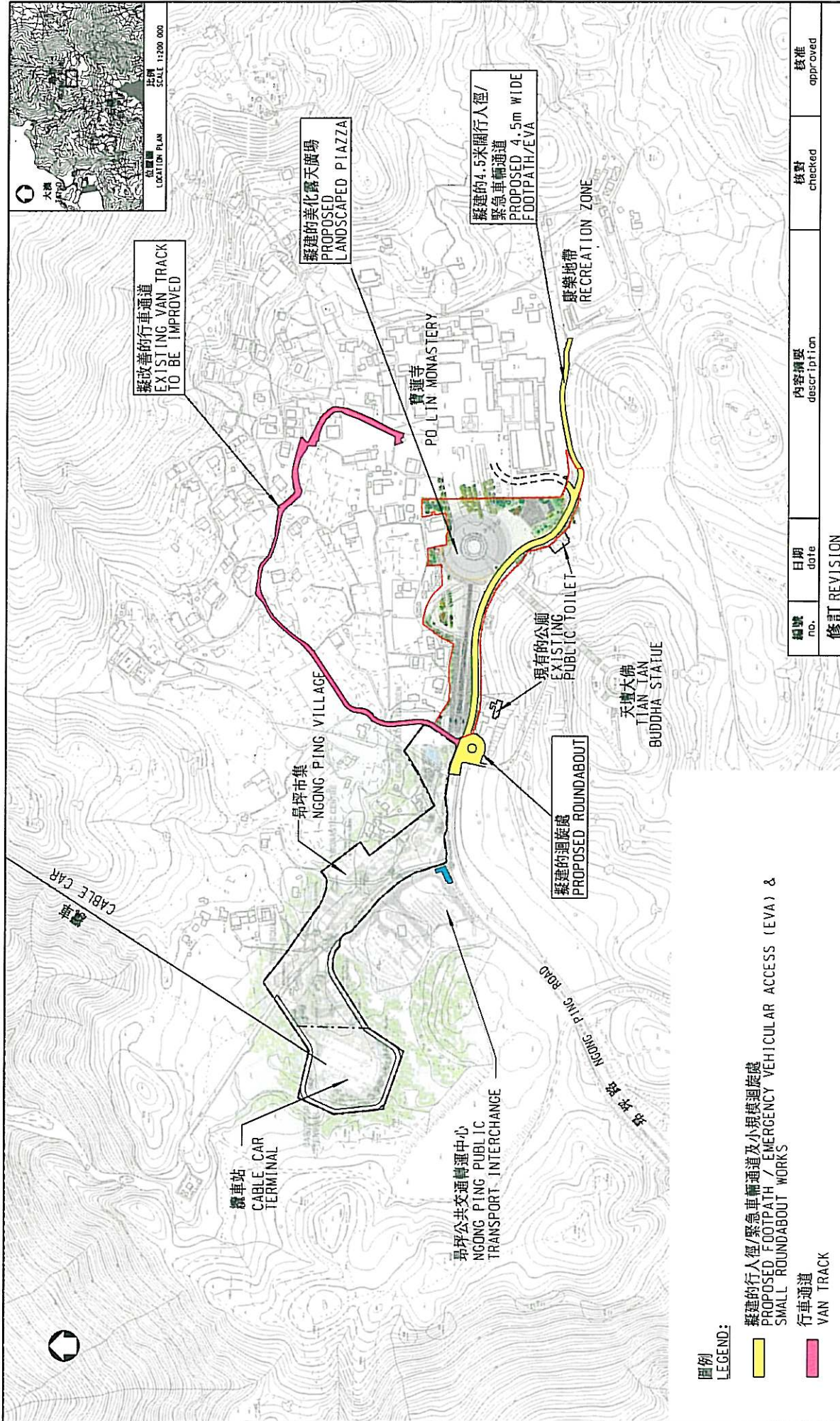
Commerce and Economic Development Bureau
February 2008





Number of Toilets inside Ngong Ping Landscaped Piazza and Ngong Ping Village

		No. of cubicles			
		Male Toilet (no. of urinals)	Female Toilet	Disabled Toilet	Total
Existing public toilets					
<u>Ngong Ping Landscaped Piazza</u> Near the entrance		7 (10)	15	1	23
<u>Ngong Ping Landscaped Piazza</u> Near the landscaped Chinese-style gardens		4 (4)	4	1	9
<u>Ngong Ping Village</u> Zone 1 (next to the shop “Red Plus”)		2 (4)	4	1	7
<u>Ngong Ping Village</u> Zone 3 (next to the shop “Da Dolce”)	on G/F	4 (6)	13	1	18
	on 1/F	5 (6)	7	1	13
Sub-total of existing toilet cubicles		22 (30)	43	5	70
Proposed Toilet		5 (8)	10	1	16
Total		27 (38)	53	6	86



圖則名稱 drawing title		項目編號 item no.		比例 scale	辦事處 office
往寶蓮寺的其他行車通道 Van Track To Po Lin Monastery		389RO		N.T.S.	港島及離島拓展處 HONG KONG ISLAND AND ISLANDS DEVELOPMENT OFFICE
		工程計劃項 PWP ITEM			
		大嶼山昂坪公共設施的改善計劃 ENHANCEMENT OF PUBLIC FACILITIES AT NGONG PING, LANTAU			土木工程拓展署 CEDD CIVIL ENGINEERING AND DEVELOPMENT DEPARTMENT