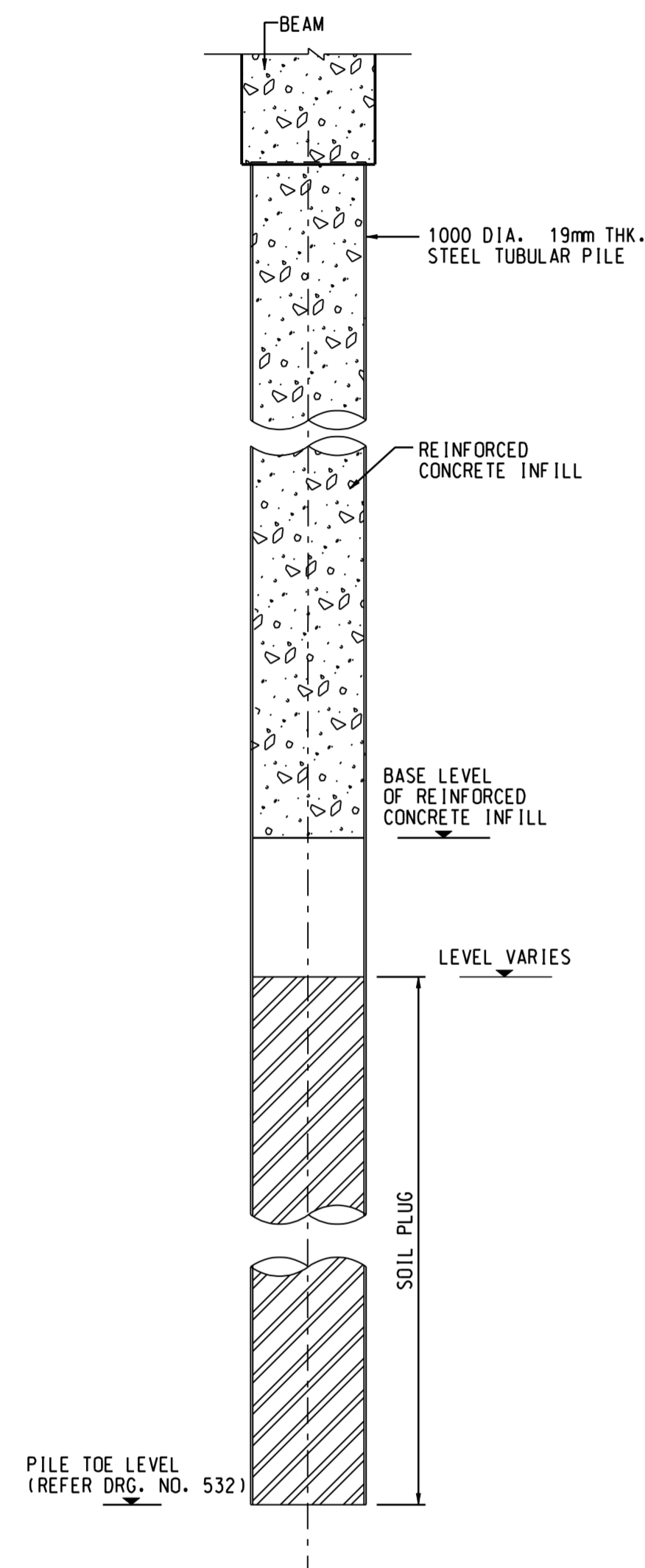


**NOTES:**

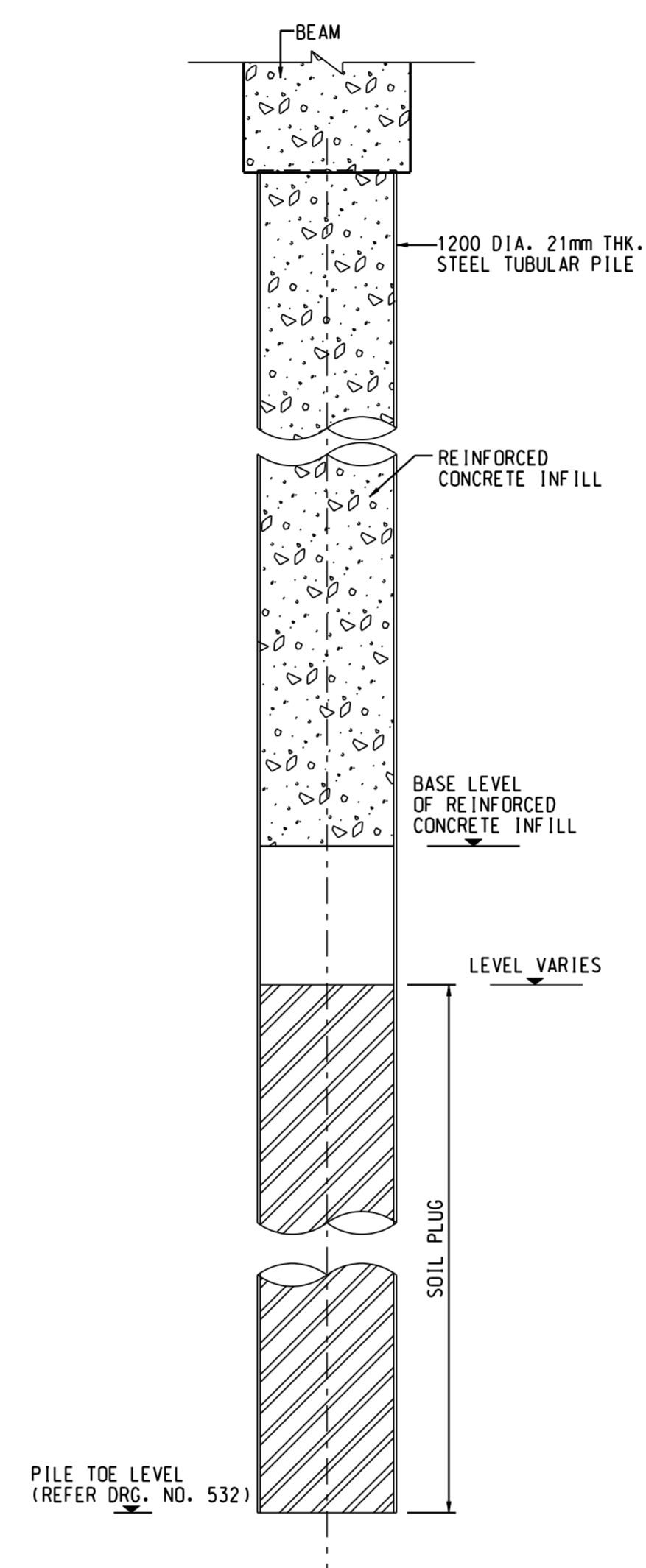
1. THIS DRAWING SHALL BE READ IN CONJUNCTION WITH DRG. NO. 532.
2. FOR GENERAL NOTES, REFER DRG. NO. 531.
3. FOR PILE LOCATIONS, REFER DRG. NO. 532.
4. A MINIMUM OF 4m LONG SOIL PLUG ABOVE THE PILE TOE SHALL BE RETAINED.
5. FOR BASE LEVELS OF REINFORCED CONCRETE INFILL REFER TABLE 1.
6. STEEL TUBULAR PILES (TYPE a, b AND c) SHALL BE DRIVEN TO SET VALUES AS CALCULATED FOR WORKING LOADS AS DEFINED IN THE PILE LOADING SCHEDULE BASED ON PILE SIZE, GEOLOGICAL CONDITIONS AND PILE DRIVING EQUIPMENT.

TABLE 1

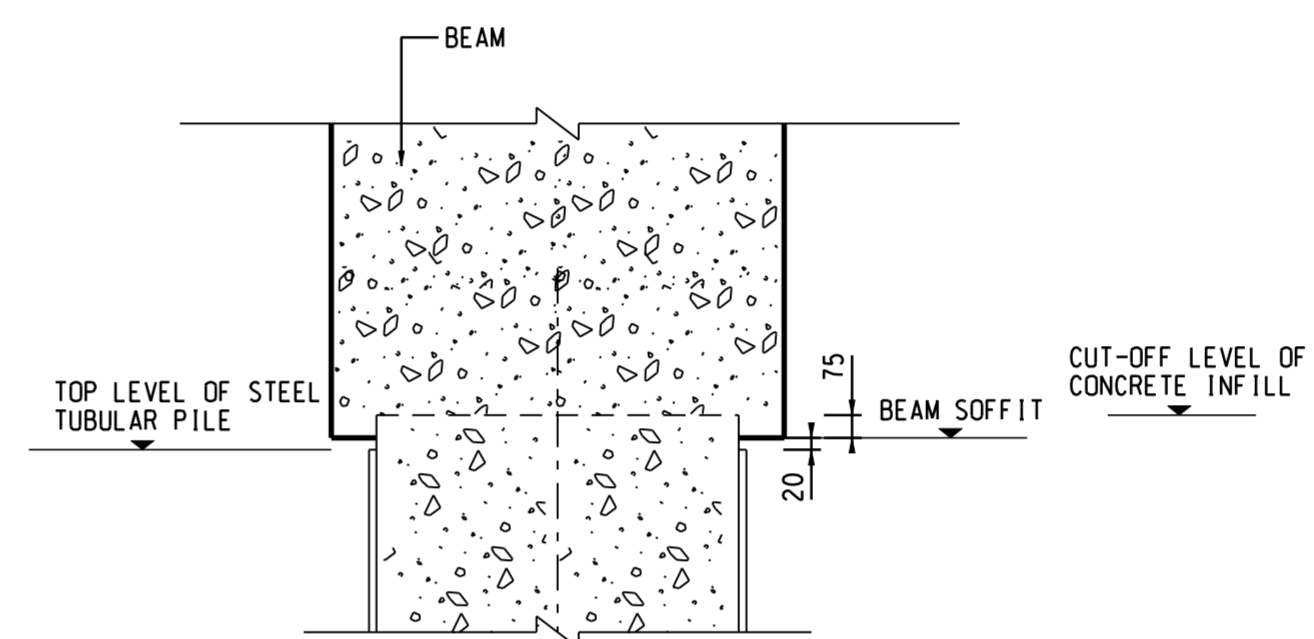
PILE ALONG GRID	BASE LEVEL OF REINFORCED CONCRETE INFILL
A	-22.0mPD
B	-18.0mPD
C	-16.0mPD
D	-12.0mPD



ELEVATION OF STEEL TUBULAR PILE WITH REINFORCED CONCRETE INFILL (1000 DIA.)  
PILE TYPE a AND b  
SCALE 1 : 50



ELEVATION OF STEEL TUBULAR PILE WITH REINFORCED CONCRETE INFILL (1200 DIA.)  
PILE TYPE c  
SCALE 1 : 50



TYPICAL DETAILS OF PILE HEAD CONNECTION TO BEAM  
N.T.S.

REV.	DESCRIPTION	BY	CHKD.	DATE

Civil Engineering and Development Department  
KOWLOON DEVELOPMENT OFFICE



KA I TAK DEVELOPMENT  
ENGINEERING STUDY CUM DESIGN AND  
CONSTRUCTION OF ADVANCE WORKS - INVESTIGATION,  
DESIGN AND CONSTRUCTION

SITE FORMATION CUM MARINE WORKS

NORTHERN TRANSITION EDGE STRUCTURES

QUAY - TYPICAL  
PILING DETAILS

MAUNSELL | AECOM

Maunsell Consultants Asia Ltd.  
茂盛(亞洲)工程顧問有限公司

DRG. NO. 533  
圖紙編號

DESIGNED BY 設計	AGREEMENT NO. 合約編號	P. DIR. APPROVED 負責人
J.L.	CE35/2006 (CE)	

DRAWN BY 繪圖	STATUS 階段
T.H.	

SCALE 比例	DIMENSIONS ARE IN 尺寸單位	COPYRIGHT RESERVED 版權所有
A1 AS SHOWN	MILLIMETRES	