

TABLE 1: QUAY DECK, PILE TYPE AND LOCATION

BAY NO.	PILE TYPE	SEASIDE	INTERNAL	LANDSIDE
		VERTICAL PILE (GRID LINE A) a1	VERTICAL PILE (GRID LINES B & C) b1	VERTICAL PILE (GRID LINE D) c1
QUAY FOR SOUTHERN TRANSITION EDGE STRUCTURES		34-41	13-33	1-12

NOTES:

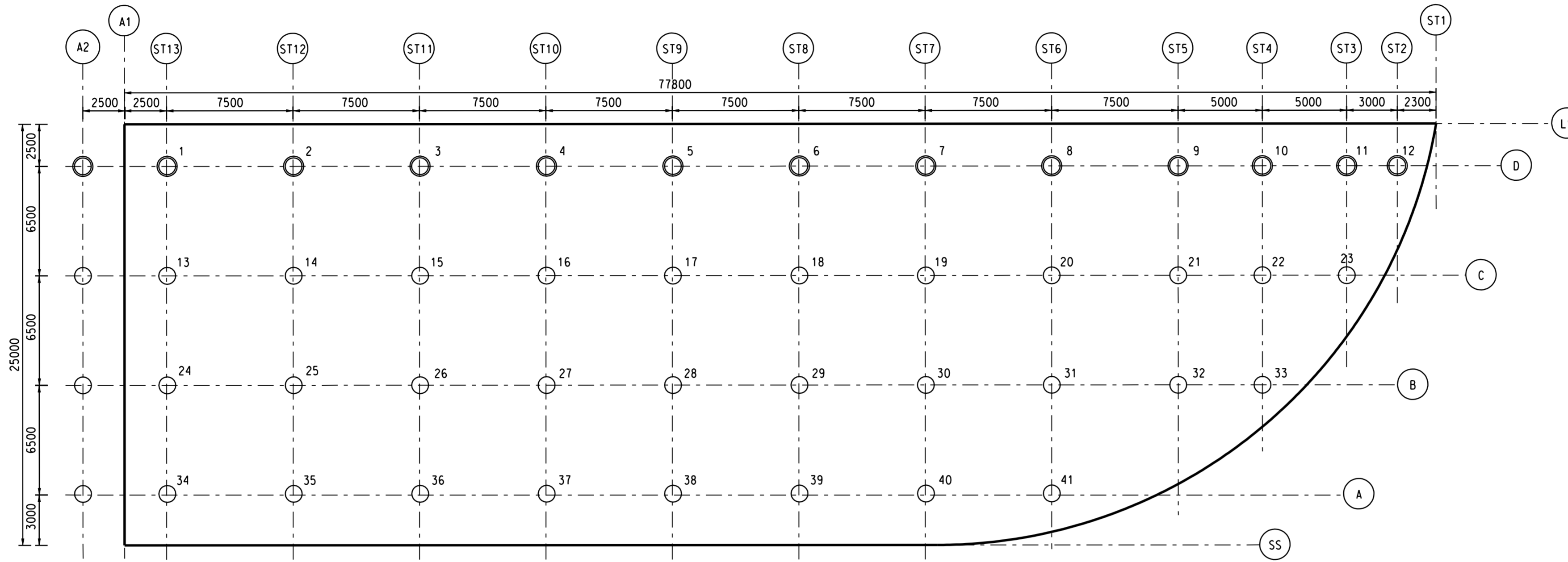
- THIS DRAWING SHALL BE READ IN CONJUNCTION WITH DRG. NO. 503.
- ALL DIMENSIONS ARE IN MILLIMETRES UNLESS SPECIFIED OTHERWISE.
- ALL LEVELS ARE IN METRES WITH REFERENCE TO PRINCIPAL DATUM.
- FOR PILE TYPES AND LOCATIONS REFER TABLE 1.

PILING NOTES:

- STEEL TUBULAR PILES SHALL BE GRADE S275 OR ABOVE TO BS EN 10113 UNLESS SPECIFIED OTHERWISE.
- PILES SHALL BE DRIVEN OPEN-ENDED.
- ALL PILES SHALL BE SUPPORTED AT TEMPORARY STAGE TO SUSTAIN ALL TEMPORARY LOADINGS THAT MAY BE EXPECTED DURING CONSTRUCTION AND LOAD TESTING.
- INFILL CONCRETE TO PILES SHALL BE GRADE 45/20.
- INTERNAL SURFACES OF PILE SHALL BE CLEANED PRIOR TO PLACING OF CONCRETE INFILL, WHEN POURING THE INFILL PLUG AT THE TOP OF EACH PILE THIS SECTION OF PILE (WHERE CONCRETE IS TO BE PLACED) SHALL BE PUMPED DRY PRIOR TO CONCRETING.
- MINIMUM COVER TO REINFORCEMENT TO BE 75mm.
- THE PILE FORCES AND MOMENTS SHOWN IN THE PILE LOADING SCHEDULE REFER TO VALUES AT TOP OF PILE HEAD.
- THE TENTATIVE PILE TOE LEVELS ARE ESTIMATED BASED ON LIMITED GEOLOGICAL INFORMATION AND ARE INDICATIVE ONLY, THE ACTUAL PILE TOE LEVELS SHALL BE DETERMINED ON SITE TO SUIT THE GEOLOGICAL CONDITIONS.

LEGEND:

- 20—PILE NO. 1000mm D.O. x 19mm THICK VERTICAL STEEL TUBULAR PILE
- ⊕ 1—PILE NO. 1200mm D.O. x 21mm THICK VERTICAL STEEL TUBULAR PILE
- LS LANDSIDE
- SS SEASIDE



PILING PLAN
SCALE 1 : 200

PILE LOADING SCHEDULE

BAY	PILE TYPE	VERTICAL LOAD (kN)					MOMENT (kNm)	ALLOWABLE WORKING LOAD (kN)	
		DEAD LOAD	DEAD LOAD + LIVE LOAD (OPERATION)	DEAD LOAD + LIVE LOAD (EXTREME)	DEAD LOAD + UPLIFT (OPERATION)	DEAD LOAD + UPLIFT (EXTREME)		COMPRESSION	TENSION
QUAY FOR SOUTHERN TRANSITION EDGE STRUCTURES	a1	1050	3620	4010	0	0	480	4010	0
	b1	980	3550	3910	0	-100	1090	3910	100
	c1	930	3400	3900	0	0	2740	3900	0

TENTATIVE PILE TOE LEVEL

BAY	PILE NO.	PILE TOE LEVEL (mPD)
QUAY FOR SOUTHERN TRANSITION EDGE STRUCTURES	1-41	-24.00

REV.	DESCRIPTION	BY	CHKD.	DATE

Civil Engineering and Development Department
KOWLOON DEVELOPMENT OFFICE



KAI TAK DEVELOPMENT
ENGINEERING STUDY CUM DESIGN AND
CONSTRUCTION OF ADVANCE WORKS - INVESTIGATION,
DESIGN AND CONSTRUCTION

SITE FORMATION CUM MARINE WORKS

SOUTHERN TRANSITION EDGE STRUCTURES

QUAY - PILING PLAN

MAUNSELL | AECOM

Maunsell Consultants Asia Ltd.
茂盛(亞洲)工程顧問有限公司

DRG. NO. 502

DESIGNED BY J.L. AGREEMENT NO. CE35/2006 (CE)

DRAWN BY T.H. STATUS

SCALE 1:1 AS SHOWN

DIMENSIONS ARE IN MILLIMETRES

© COPYRIGHT RESERVED