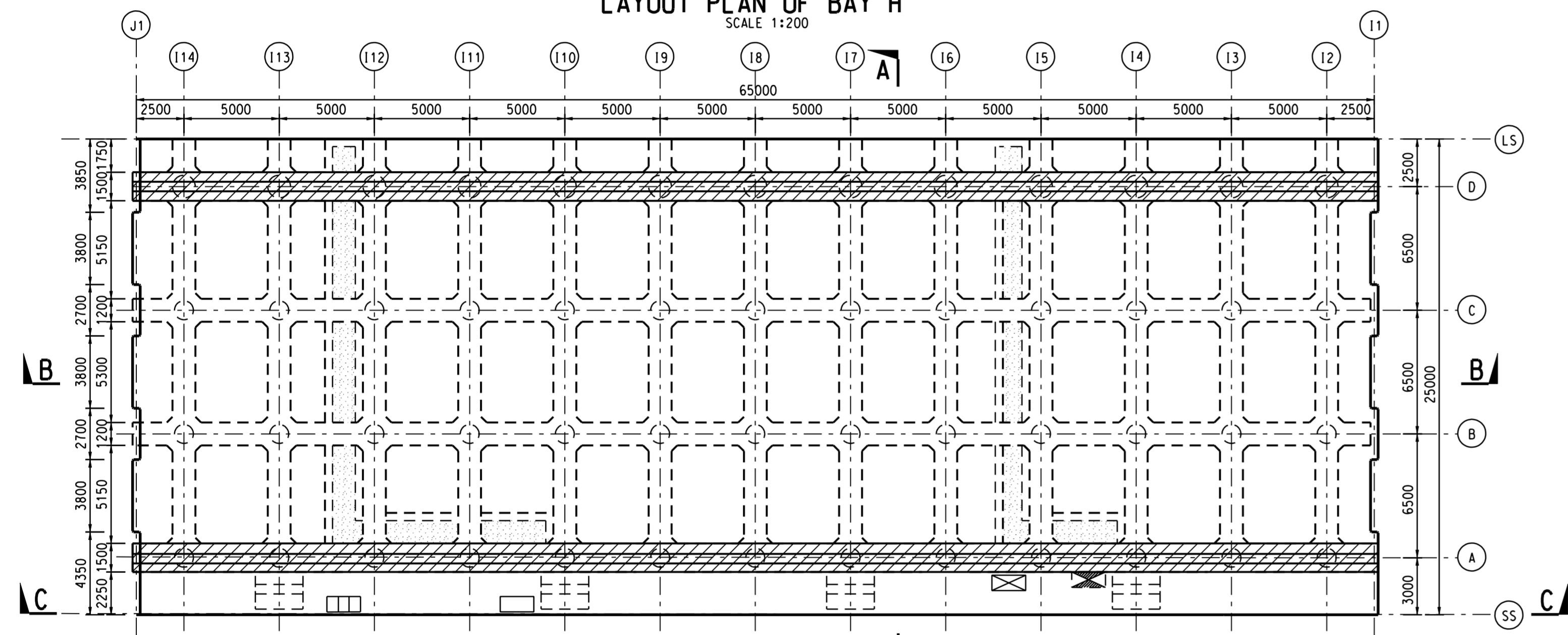
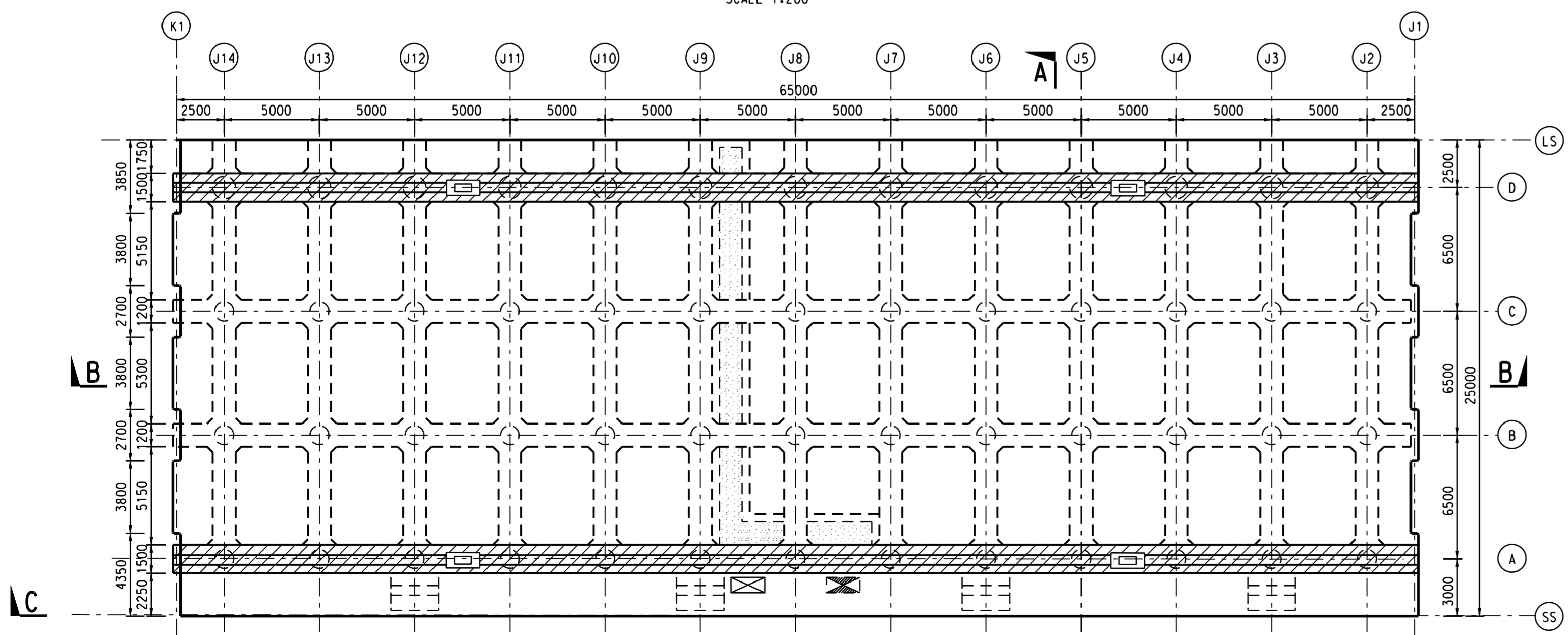


LAYOUT PLAN OF BAY H  
SCALE 1:200



LAYOUT PLAN OF BAY I  
SCALE 1:200



LAYOUT PLAN OF BAY J  
SCALE 1:200

**NOTES:**

1. THIS DRAWING SHALL BE READ IN CONJUNCTION WITH DRG. NO. 421, 422, 423, 425 AND 426.
2. FOR GENERAL NOTES, REFER DRG. NO. 401.
3. FENDERS AND BOLLARDS ARE NOT SHOWN FOR CLARITY. FOR LOCATIONS REFER DRG. NO. 401.
4. FOR PILING DETAILS, REFER DRG. NO. 411 TO 414.
5. FOR DETAILS OF FENDER, BOLLARD AND ACCESS LADDER REFER DRG. NO. 431.
6. FOR MOVEMENT JOINT DETAILS, REFER DRG. NO. 432.
7. FOR TYPICAL UTILITY TROUGH ARRANGEMENT, REFER DRG. NO. 441 TO 443.
8. THE LOCATIONS OF TIE DOWN ANCHORS FOR PASSENGER GANGWAYS ARE BASED ON THE ASSUMED GANGWAY SIZE AND POSITION. ALTOGETHER 6 SETS OF TIE DOWN ANCHORS ARE PROPOSED.

**LEGEND:**

- J.F.L ACCESS LADDER
- RAIL RESERVE
- TIE DOWN ANCHOR FOR PASSENGER GANGWAY
- POSSIBLE POWER FEEDER PIT FOR ON-SHORE POWER SUPPLY SYSTEM AT APPROX. 80m c/c SPACING
- WATER SUPPLY CONNECTION PIT AT APPROX. 100m c/c SPACING
- ELECTRICITY CONNECTION PIT AT APPROX. 80m c/c SPACING
- SHORE SEWAGE RECEPTION PIT AT APPROX. 100m c/c SPACING
- UTILITY TROUGH

REV.	DESCRIPTION	BY	CHKD.	DATE

Civil Engineering and Development Department  
KOWLOON DEVELOPMENT OFFICE



KAI TAK DEVELOPMENT  
ENGINEERING STUDY CUM DESIGN AND  
CONSTRUCTION OF ADVANCE WORKS-INVESTIGATION,  
DESIGN AND CONSTRUCTION

SITE FORMATION CUM MARINE WORKS

EDGE STRUCTURES  
QUAY - BAYS H, I & J  
FRAMING PLAN

SHEET 4 OF 5

**MAUNSELL | AECOM**  
Maunsell Consultants Asia Ltd.  
茂盛(亞洲)工程顧問有限公司

DRG.NO. 424  
圖紙編號

DESIGNED BY J.L.  
繪圖員  
AGREEMENT NO. CE35/2006 (CE)  
合約編號  
P. 011 - APPROVED  
負責人

SCALE 1:200  
比例  
STATUS 階段

DIMENSIONS ARE IN MILLIMETRES  
尺寸單位  
© COPYRIGHT RESERVED  
版權所有