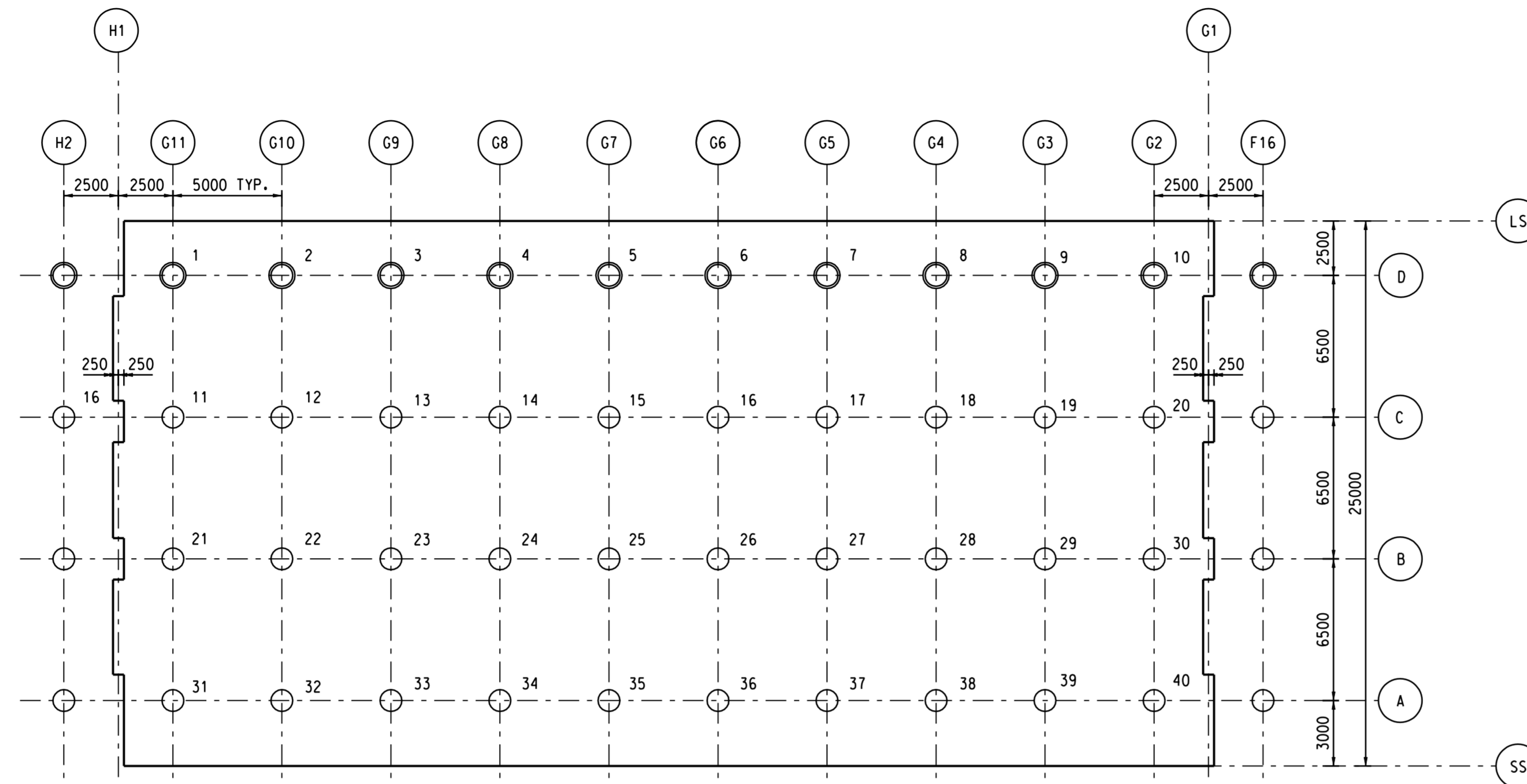


**NOTES:**

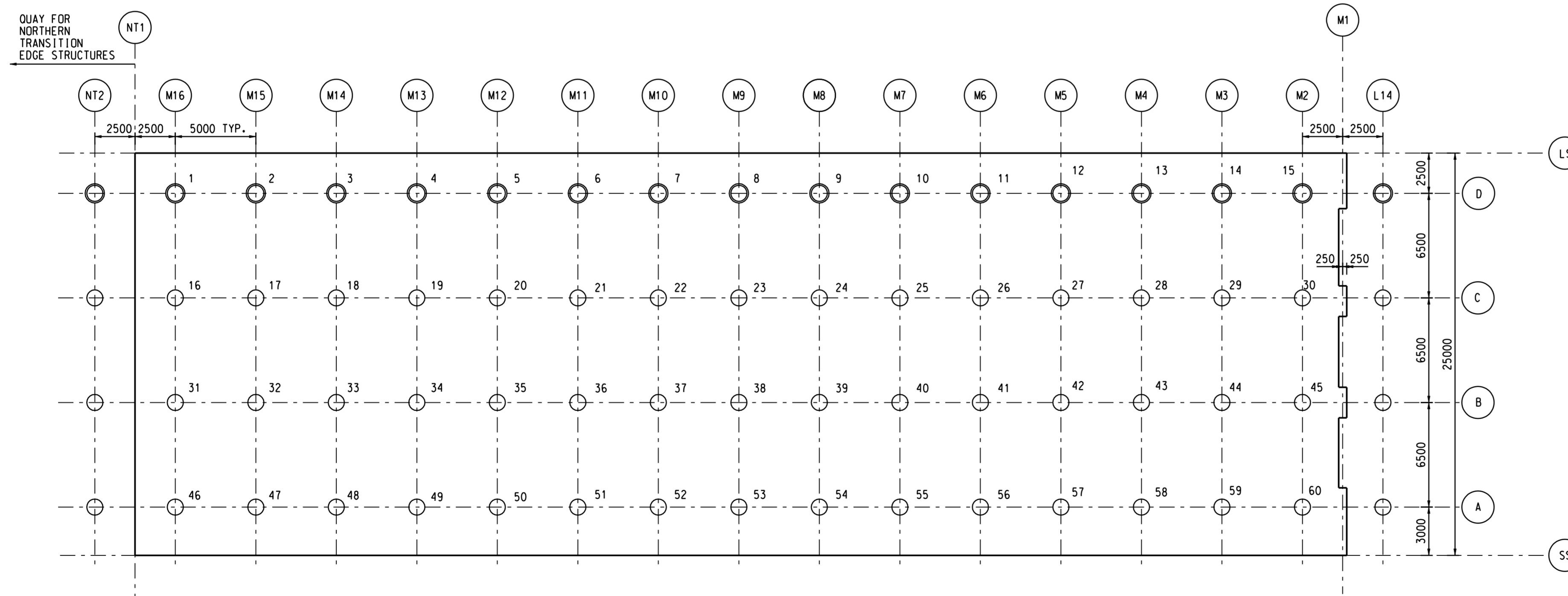
1. THIS DRAWING SHALL BE READ IN CONJUNCTION WITH DRG. NO. 411, 413 AND 414.
2. ALL DIMENSIONS ARE IN MILLIMETRES UNLESS SPECIFIED OTHERWISE.
3. ALL LEVELS ARE IN METRES WITH REFERENCE TO PRINCIPAL DATUM.
4. FOR PILE TYPES AND LOCATIONS REFER TABLE 1 IN DRG. NO. 411.

**LEGEND:**

- 20--PILE NO. 1000mm O.D. x 19mm THICK VERTICAL STEEL TUBULAR PILE
- 1--PILE NO. 1200mm O.D. x 21mm THICK VERTICAL STEEL TUBULAR PILE
- LS LANDSIDE
- SS SEASIDE



**PILING PLAN - BAY G**  
SCALE 1 : 200



**PILING PLAN - BAY M**  
SCALE 1 : 200

REV.	DESCRIPTION	CHK'D	P.L.C.	DATE

Civil Engineering and Development Department  
 土木工程發展署  
 KOWLOON DEVELOPMENT OFFICE  
 九龍發展處



KA I TAK DEVELOPMENT  
 ENGINEERING STUDY CUM DESIGN AND  
 CONSTRUCTION OF ADVANCE WORKS-INVESTIGATION,  
 DESIGN AND CONSTRUCTION

SITE FORMATION CUM MARINE WORKS  
 EDGE STRUCTURES

**QUAY - PILING PLAN**

SHEET 2 OF 2

**MAUNSELL | AECOM**  
 Maunsell Consultants Asia Ltd.  
 茂盛(亞洲)工程顧問有限公司

DRG.NO. 圖紙編號 **412**

DESIGNED BY 設計 J.L. AGREEMENT NO. 合約編號 CE35/2006 (CE) P. 01+ APPROVED 負責人

DRAWN BY 繪圖 T.H. STATUS 階段

SCALE 比例 A1 AS SHOWN DIMENSIONS ARE IN 尺寸單位 MILLIMETRES

© COPYRIGHT RESERVED 版權所有